

IAG

INTERIOR ARCHITECTURE GROUP

I N N O V A T I V E

INDIAN INTERIORS

NEW TRENDS IN APARTMENTS, PENT HOUSES & VILLAS

OVERVIEW

This project was commissioned by the three youngest members of a family, who has been associated with the studio from its very inception. The brief to the architects was to create a sophisticated and serene space, which could adapt and take on multiple roles ranging from an intimate personal space to a sophisticated social space.

The design of the three bedrooms reflects the personality of its occupant and is adapted to serve their differing habits. All the bedrooms are provided with ample wardrobe and storage space, though designed to feel inconspicuous and unobtrusive.

Collaborative has custom designed almost all the furniture for the apartment, including handles & mirrors, thus imparting to each space a distinctive flavor, while being coherent in the whole.

APARTMENT BY THE BAY

Location: Mumbai, Maharashtra

Built up Area: 186 SQ MT

Designing Firm: COLLABORATIVE ARCHITECTURE

Location: Mumbai, Maharashtra

Designer in Charge: Lalita Tharani & Mujib Ahmed

Design Team: Lalita Tharani, Mujib Ahmed, Vineeta & Shoukat

Photography Courtesy: Lalita Tharani & Manish Gala

Boldly sculpted furniture including Patricia Urquiolas' seating and a Moroso coffee table, executed in monochromes of white and soft beige elevate the living room to a sophisticated entertaining space.



What was originally a long drab entrance passageway, has been transformed into a significant spatial element by integrating its design with the overall scheme, through an architectonic overlay of planes, materials and geometry. A veneered niche installed with a ceiling to floor handmade silk Aqua Creations light becomes the focal point of this space.

COLLABORATIVE
ARCHITECTURE

www.collaborativearchitecture.com



● ●
 The hall, as wide as the apartment, enjoys an expansive view of the bay from the living room side. The design capitalizes on this configuration, letting in light and breeze to make this space refreshing and rejuvenating.

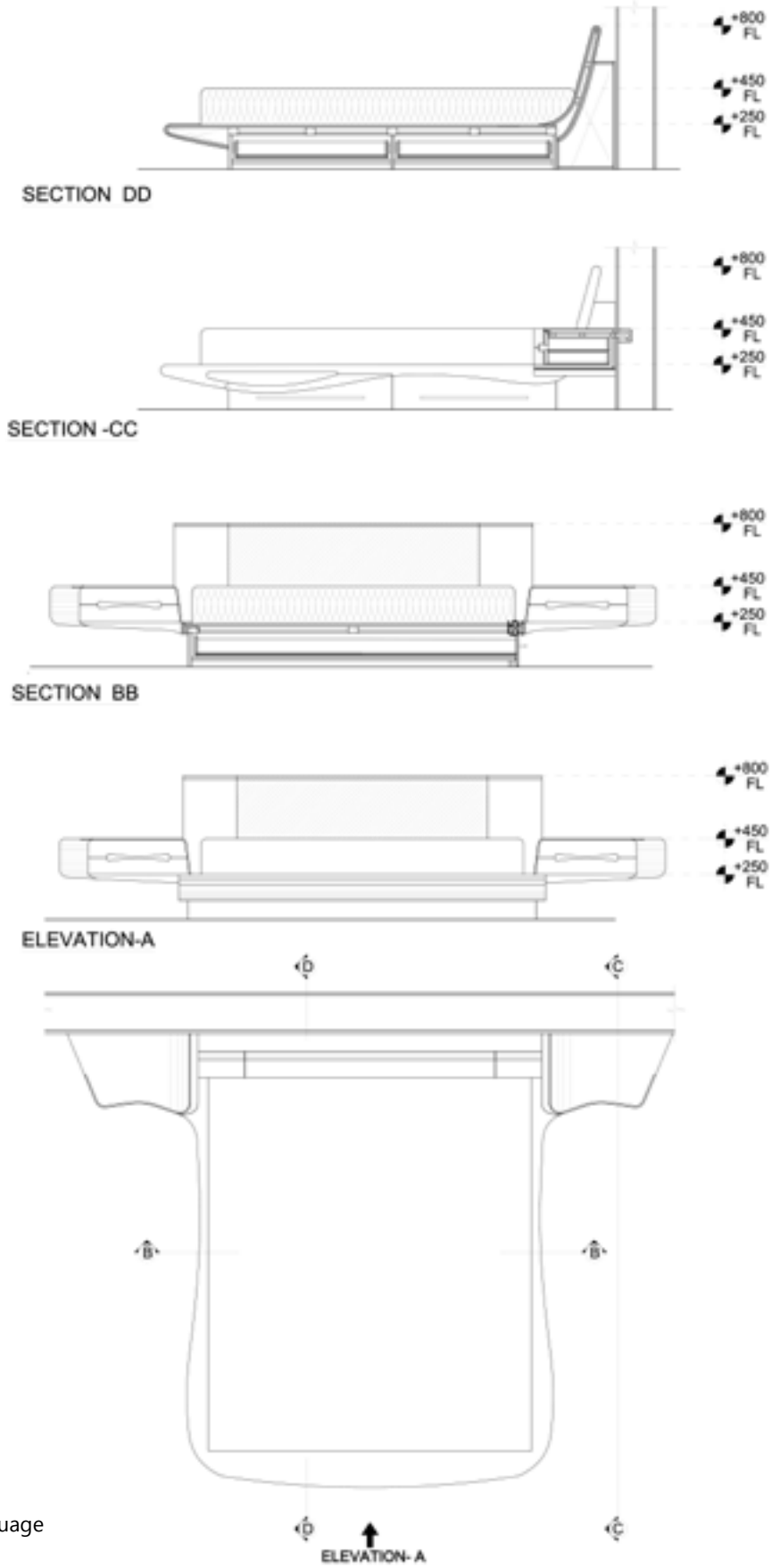


● ●
 The kitchen was small relative to the size of the apartment. Thus it is designed as an open kitchen with a bar counter overlooking the dining space, which also suits the clients' lifestyle and addressed their brief. The high-gloss lacquered white ceiling projects over the bar counter, thus visually expanding the kitchen volume.

The kitchen is comparable to its contemporary counterparts in terms of concept, finish and equipment. However small details make it individual such as the amber yellow light cube, the wall-hung clock and the island cooktop.



SECTIONAL ELEVATION THROUGH BEDROOM, LIVING AND KITCHEN

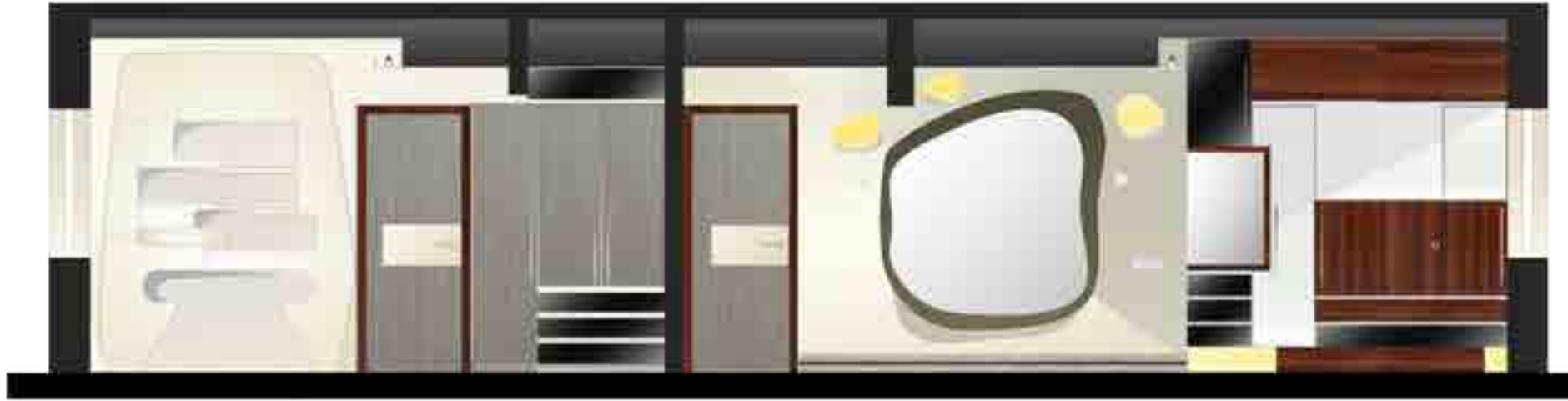


The bedroom of the youngest sibling, still in his early teenage years, uses the same design language but adapted to accommodate an intimate study and playful elements such as the clock on the curvaceous platform bed.



An innovative bookshelf in the room of the eldest sibling reflects her love for reading. The adjoining bathroom is designed to maximize the space. It is accented with copper tones introduced through copper patinated tiles, copper ceramic washbasin & accessories, giving a nod to the warm hues of the reddish brown veneer that is used throughout the apartment.





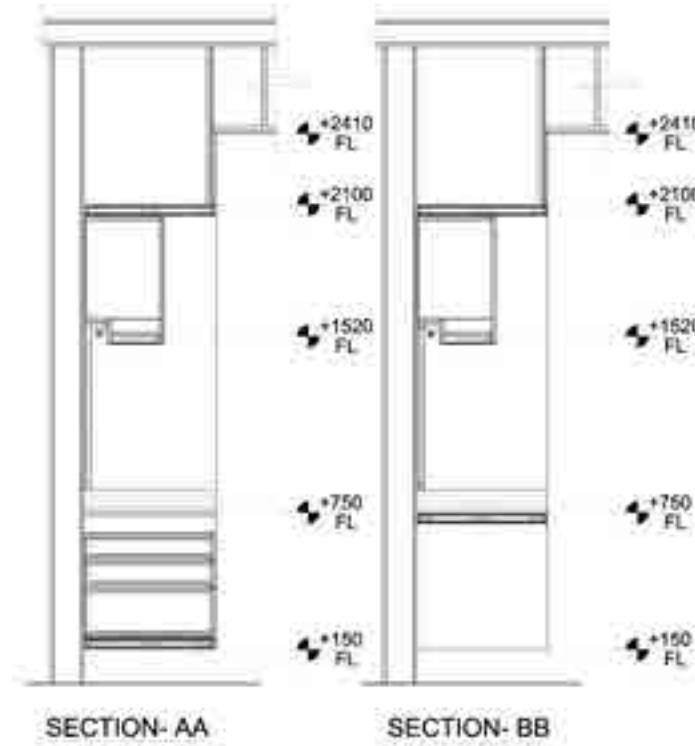
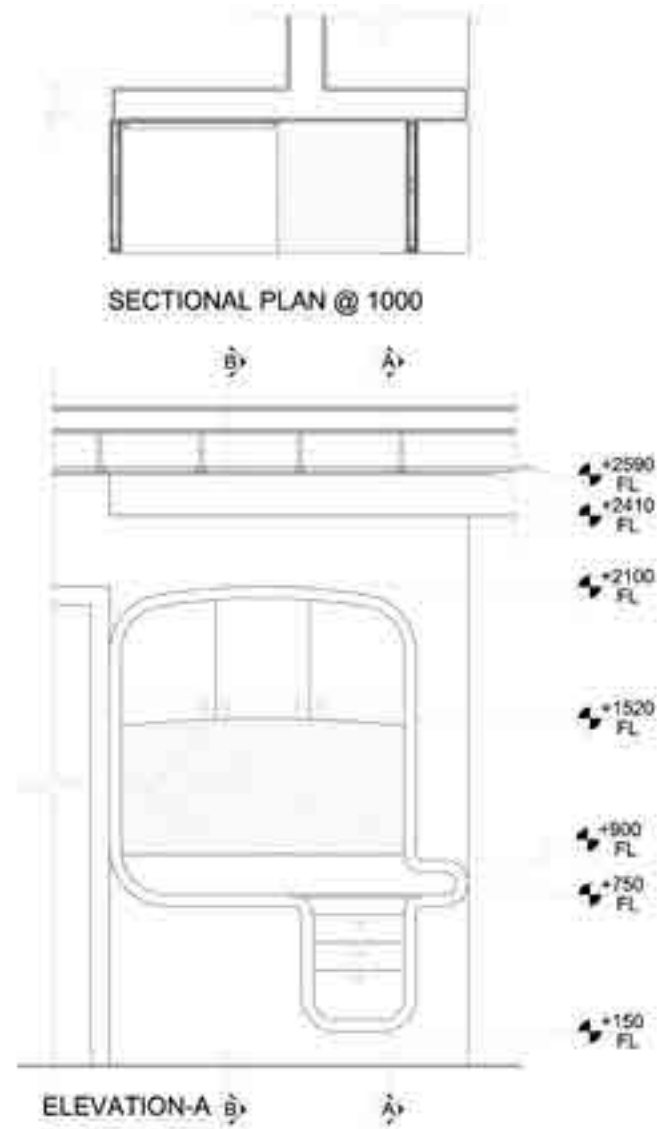
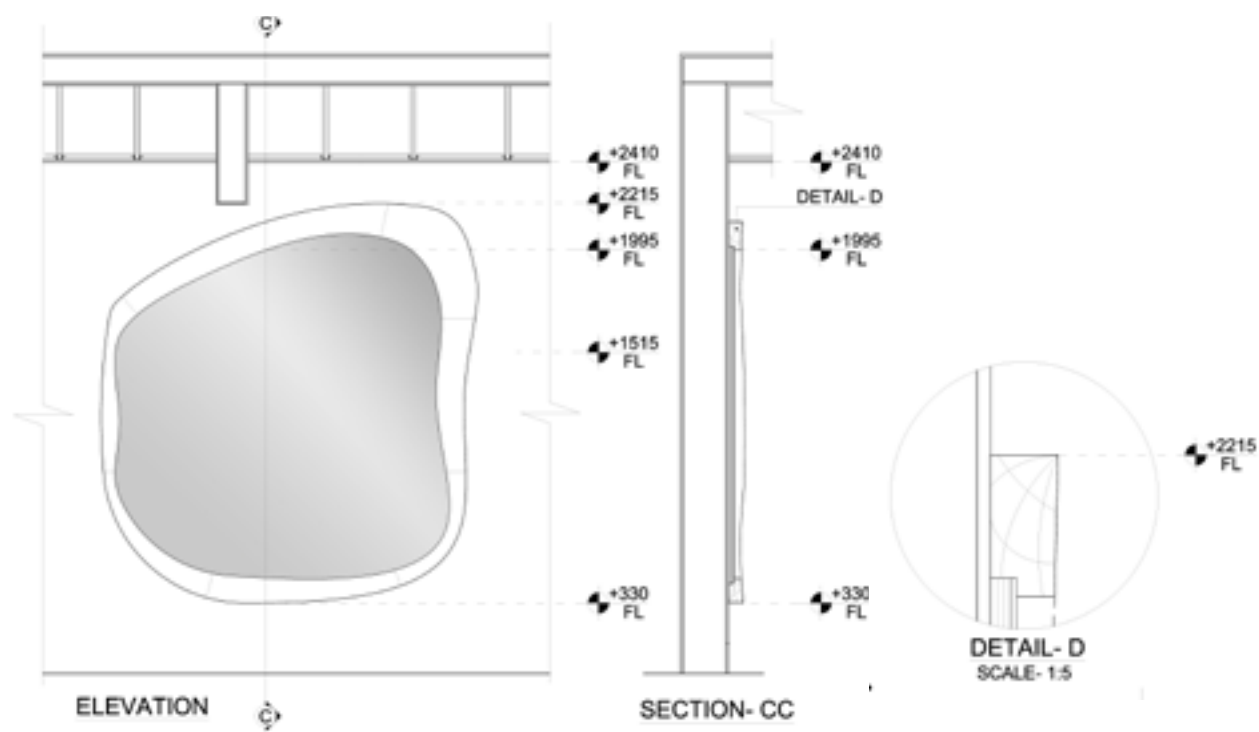
SECTIONAL ELEVATION THROUGH BEDROOMS



SECTIONAL ELEVATION THROUGH LIVING ROOM



● This mirror is bold in design for its over-size, chunky frame and amoebic shape, yet remains a light-hearted and cheerful ornament in the son's bedroom.





FLOOR PLAN



- 1. ENTRANCE
- 2. PASSAGE
- 3. KITCHEN
- 4. UTILITY
- 5. LIVING AREA
- 6. DINING AREA
- 7. BEDROOM
- 8. WALK IN WARDROBE
- 9. BATHROOM

MATERIAL APPLICATIONS

Flooring: Sliver Serpengante by Classic Marble

Wall Cladding: Colour - Morning Glory by Asian Paints

Interior Finishes: Custom designed Handles by Collaborative Architecture, Hafele, Glacier White Corian by Dupont, Fumed Larch & Stained Oak veneers/ wood by Jalaram

Light Fixtures: Aqua Creations, Artemide, Flos, Foscarini, Axo Light, LZF lamps

Kitchen Fixtures: Blum and Faber, Equipments-Bosh Panasonic

Bath Fixtures: TOTO

Furniture & Decor: Custom designed by Collaborative Architecture, SEATING - Moroso, Minotti, Magis, Cappellini

Soft Furnishings: Drapes - Atmosphere, Carpet - Hands Carpet

The bedroom for the the middle sibling uses a gentle feminine aesthetic. A walk-in wardrobe and dressing space is carved out from the bedroom space. The long narrow configuration of the bathroom is countered by its thoughtful design that carries forth the design direction of the bedroom. Thus it is detailed with copper hued mosaic and a shower zone that is framed by an amber LED glow.



Concept, Publication & Presented By

IAG

INTERIOR ARCHITECTURE GROUP

www.iagroup.co.in | interiorarchitecturegroup@gmail.com



INR ₹ 4500

US \$ 90