

HOME & DESIGN

Volume 3 No 6
₹250

A Times of India publication

TRENDS

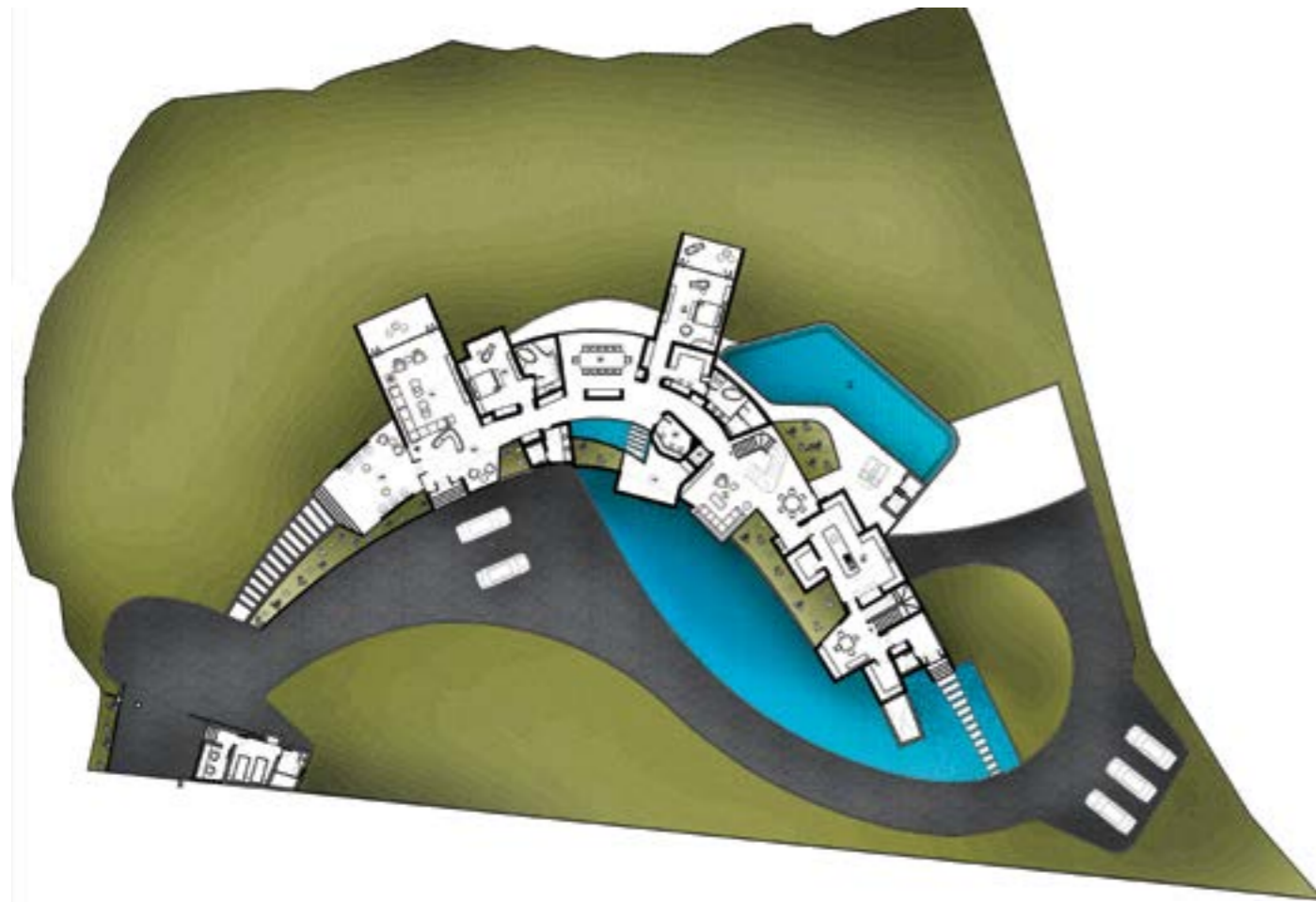


R.N.I. MAHENG/2013/50949



MW88151101

The innovative design of the **House of Cantilevers** by architects Mujib Ahmed and Lalita Tharani capitalises on its contoured site with six suspended volumes



Mid-level layout plan

Designed for a traditional family with a futuristic outlook, the concept for House of Cantilevers is conceived by architects Lalita Tharani and Mujib Ahmed of Collaborative Architecture, Mumbai. Overlooking a scenic valley, the house is located on a contoured site that provides the optimal orientation to create a structure with multiple cantilevers to decrease the footprint on land.

Standing at three levels high, the house has been optimised for thermal exposure. The curved form of the plan, passive shading devices, semi-enclosed courts along with projecting and recessed volumes allow for just the right amount of sunlight, thereby creating a pleasant level of comfort in the interior spaces.



Conceptual sketch



A sweeping curve created on the basis of sun-path analysis

The primary public spaces are all located on the mid-entry level, most of the bedrooms on the first level and the services and ancillary spaces on the basement level.

All the bedrooms have been cantilevered almost eight to nine meters, making them look as though they are suspended.

This avant-garde design is supplemented by the interiors, which display a traditional hierarchy of spaces. The rigid spatial boundaries on the inside suit the lifestyle of its residents, whereas the open external plan gives the house its futuristic appeal.



The cantilevered design combines new-age technology with the textural quality of the locale