

# 2A

Architecture & Art

Part 1: Presentation of 2AAA Jury Members' Projects and few other Outstanding Projects

Part 2: Description of Fundamental Character of Iranian World Heritage Properties



Cover: Tabriz SMP Tower / Bahram Shirdel

ISSN: 1735-5192 Spring & Summer 2015 Quarterly, ISSUE NO. 31 & 32

UAE: AED 40 - Qatar: QAR 60 - Bahrain: BHD 6 - Oman: OMR 6 - Kuwait: KWD 4  
Iran: RIAL 300000 - Turkey: TRY 45 - U.K: GBP 16 - EUR: EUR 18 - USA: USD 25 - Canada CAD 30

ISSN 1735-519-2



9 771735 519006

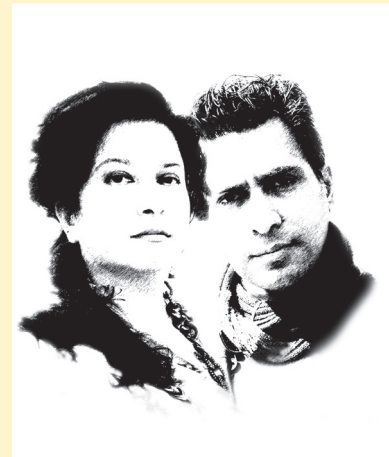
## COLLABORATIVE ARCHITECTURE

COLLABORATIVE ARCHITECTURE is an International Design practice, based in Mumbai, having design centres in Beijing and South India. Headed by Lalita Tharani and Mujib Ahmed, the studio is credited with designing some of the most innovative projects located in India. The firm has opened its international office in Beijing in 2014 and currently collaborating with the renowned Berlin based practice JH MAYER, headed by the Jürgen Mayer.

The practice is driven by innovation and ceaseless pursuit of quality in design to create projects, which are highly sensitive, poetic, and contemporary within the budget limit. Every project is an exploration, going beyond the functional brief, creating a symbiosis of people, places, culture, climate, economy and collaborative efforts of related disciplines.

The firm has won 36 awards since its inception in 2002, 13 out of them are highly coveted international recognitions. COLLABORATIVE's projects has been extensively published in National and International Print and Web media.

[www.collaborativearchitecture.com](http://www.collaborativearchitecture.com)



# Reflected Topography- BRGT

## Bengaluru

**Entry Description:** The brief was to design a multi-functional Public Space, which could include variety of programs like relaxing zone, waiting zone, transition zone, and also a place where intimate and private meetings could happen. Above all a space that could set a bench march for Public Space Design by its design innovation and sustainability agenda (The project is Platinum LEED Certified) The lobby is dominated by a central column, which supports the waffle slab system that spans across 32 m X 32 m space, with a height of 9m. The front facing sides have structural glazing and the sides on the back are stacked with services and toilets. The lobby functions nearly 18 hours a day, the project is equipped with BMS with Dali ballasts for Day Light Harvesting. The expansive glazing on two sides allow ample amount of daylight during any season, making the system utilize minimal energy in day time. The Central column became the axis for spatial orientation. The lighting design plays the lead role in the overall architectural identity, and the project succeeds in effortlessly merging the lighting design and architectural space into a unified whole. The project is unique in that sense, to make the architectural lighting as the Raison detre, and the space definer, not just in stylistic terms, but in terms of tectonic manipulation of the neutral space. The seating cluster, again specially designed for the project triggers social interactions, and creates an undulating topography of contoured volume at the eyes level, in a way complementing the undulating pattern on the ceiling. The Strip light, highlights along the bottom of the sofa clusters creates a dynamic pattern and goes as an integral part of the overall design. The waffle slab system, which is the most dominant part of the space, left exposed to highlight the structural clarity of the space- one of the earliest design decisions which paid dividends. The pattern of the waffle system acted as the spring board for the design of the customized lighting, which resulted in a highly dynamic space- reflecting the geometry of structural system- the REFLECTED TOPOGRAPHY. The central column anchors the spatial disposition and in the vast lobby. The architectural lighting has been conceived as foliage which stems from this anchoring element. The column has been clad with corian panels, with special details to have access for maintenance and service. The cantilevered meeting rooms are added to the existing mezzanine slab to accommodate private meeting rooms. The Lobby has 5 such private meeting rooms, where 4 are located at the mezzanine level as added cantilevered units projecting into the atrium space LED based light sources have been used for the project. Customized Fabric lights has 1200 long LED tubes, the passage spaces have 600 & 1200 LED panel lights and 5W LED Spots and the waffle has 600 X 600 LED Panel Lights to supplement the customized lighting and to create a pattern in the waffle, which complement the configuration of the fabric lights.

