

THE HOMES MAGAZINE FOR MODERN LIVING

Livingetc

June 2018 ₹150

INDIA EDITION

INDOOR GREENS

The new deco essentials

Environment Special

PROF. MIKE KNOWLES
on the trend of
UPCYCLING

Summer staples
GREENS, WHITE AND COMFORT

Design Project
DREAM BATHROOMS



CITY LIGHTS

Architects Lalita and Mujib use sharp light contours to demarcate functionality of areas in a luxury apartment

THE PROPERTY

A single level 3800 sq ft apartment. It has four bedrooms with attached bathrooms, a powder room, large living and dining area with an open kitchen which has its wet areas and utility areas tucked away. The apartment, which is a show-flat for a leading developer in Kerala, also has a separate servant suite. The master-suite is a lavish allocation of space with a personal balcony.

LIVING ROOM

The expansive 'landscape frame' of the entry and living space is accentuated with skilful layering of ceiling planes and indirect lighting. The corner floor-to-ceiling sculptural light configuration enhances the atmosphere and adds a note of drama.

Get the look The wall is painted in Morning Glory by Asian Paints and the wooden areas covered with Tabu veneers. Since this is a show-flat all furniture and lights were locally sourced.

Photography / Suneesh Suresh* Words / Elizabeth Eapen

AN AESTHETICALLY PLEASING

and comfortable living space has started figuring more and more prominently on every harried city dweller's list of priorities. When these are located within city limits, the architect and designer are presented with a unique challenge. How do you shut out the city and create a cocoon for the homeowner? For this project, developing uber luxurious condo units in the bustling heart of Kochi, in Kerala, Skyline Builders, one of the leading developers in south India, approached Collaborative Architecture, a dual city-based practice with design centres in Calicut and Mumbai, with a signature brief.

The challenge if one can call it that, was to rationalise and rework a new and existing layout in a building that houses 50 similar condominium units, two to each floor. Each apartment is generously sized, with 3800 sq ft of built-up area, consisting of four bedrooms and an expansive living-dining space. As the apartment given to the team at Collaborative Architecture was a representational sample, not for any particular client, the project evolved in an interesting and different way. They did not have the luxury of knowing who they were designing for, did not have the chance to imbue the space with the personal touches that make a house into home. "We had to set a standard, as it were," says Lalita Tharani, one of the principals at the firm along with Mujib Ahmed, "and come up with a design that would position the property in a strategic way, create a space and a layout that would function efficiently and look aesthetically pleasing at the same time."

Was that difficult? Not really, say the designers. "We overestimate our ownership of the space most of the time, whereas clients are infinitely adaptable to successful special ideas. Our job as architects, in these cases, is to come up with credible ideas. Those work out successfully for a wider set of clientele."

Regional preferences, the builder's huge data base of client preferences, etc were their starting point. There is also, they aver, an overall design direction that they bring to each project, with the design evolving not strictly from a functional brief, but a broader one of innovation and design research.

The USP of this particular project is the panoramic living-dining space, and the design celebrates it by enhancing the spatiality as one enters the apartment. "We were conscious that the project has to ultimately appeal to a wide and diverse audience," says Mujib, "so our intent was to avoid any element that could be seen as too personal or individualistic. The space was designed as a shell with curated pieces populating it."

Detailed interactions between the builder and the architects led to the understanding of what a lot of market studies have revealed - that the final buying decision is heavily influenced by the lady of the house and the kitchen plays an important role in that process. So they custom designed an innovative kitchen, which combines the features of a conventional 'L' shaped counter and an island. The bathrooms were completely redone and designed to be replicated for the entire project, but with so much attention to detail and in the selection of the material palette, that they can easily be replicated in myriad combinations, each time giving that all-important space a unique look.

To see more of Lalita and Mujib's works log on to collaborativearchitecture.com



LIVING AND FAMILY AREAS

The living and family living area with its expansive balcony overlooks a scenic view. Veneered ceiling draws the eye along the length of the living and family area, linking the space into one unit and adding warmth. 'The rough texture of the beige sandstone on the right wall at the entry, with the artistic mirror and a designer console unit makes a perfect entry statement,' says Lalita

Get the look Find a similar carpet at Qaleen, sofa seating and side-tables at Furniturewalla. The Hidden Gallery can customise a sideboard like this. Find a light like this at Ivanka.



↑ **DINING**

The large walnut wood dining table is flanked by framed copper tinted mirrors on one side and ten low hanging golden dome-shaped lights, imparting a warm glow
Get the look Get a similar dining table and chairs customised at Furniture Library. World Bazaar has similar over-sized planters and lights and lamps like this available at Ivanka.

→ **SEATING IN BEDROOM**

A comfy leather chair next to a console makes a good reading corner in the bedroom.
Get the look Have a similar chair made at the Furniture Library and find a similar round rug at Qaleen.



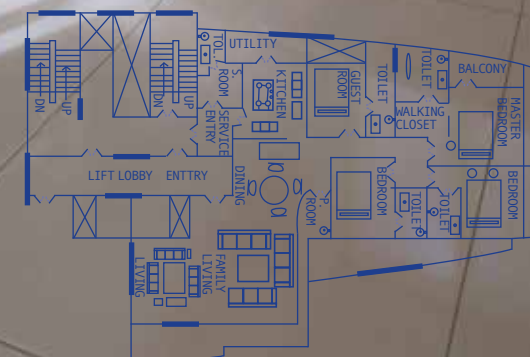
KITCHEN

The flowing counters bring the work-space triangle closer, while creating a partial island section. The fluidity is accentuated with lighting below the counters and above the island section. The solid surface counters wrap around the storage below in a snug hug

Get the look The wall is painted in Morning Glory by Asian Paints and the solid surface of the counter is in Glacier White Corian by DuPont. All the hardware used is from Hafele.



THE BLUEPRINT



FAMILY LIVING

The layered ceiling extends to the walls, framing the home theatre in a unique way. A geometric custom made lagre rug adds a distinct element. 'This is my favourite spot,' says Mujib. **Get the look** Find a similar leather swivel chair at Idus. Portside Cafe has leather pouffes. Find similar sofa and side tables at Furniturewalla.



↑ **GUEST BEDROOM**

A large leather bed with high headboard dominates this guest bedroom where the colours have been kept neutral with blur accents. **Get the look** Get a similar bed made at The Furniture Library. Havells has similar fans and find similar fabric for curtains at DDecor.

POWDER ROOM →

Glass mosaic panels add a touch of distinction to this bathroom. **Get the look** Find glass mosaic at Sicis and sanitary fittings at Kohler.

THE DESIGNERS →

Architect Lalita Tharani and architect Mujib Ahmed of Mumbai based Collaborative Architecture who have designed the interiors of the apartment.



Lighting fixtures demarcate areas and work as section dividers in large open spaces.



MASTER BEDROOM

mis-matched bed-lamps and a free-standing dresser mirror give the master bedroom an unmistakable look.

Get the look A similar leather bed and bench can be customised at Portside Cafe. Find a similar rug at The Carpet Cellar.



MASTER BATH SUITE

The luxurious Master bath suite has a sweeping vanity counter in imported marble, with a contemporary bath tub and an unusually shaped dramatic mirror. **Get the look** Find similar mirror at Vetro Moda and a similar Antonioplupi bath-tub at Keha Casa.





↑ **BEDROOM**

A green accented bedroom with a framed custom made leather headboard and a low funky bed. A custom made silk fabric light completes the picture. Get the look Find similar hanging bed-lights at Kapoor Lamps. Have the bench and side tables customised at Knock on Wood

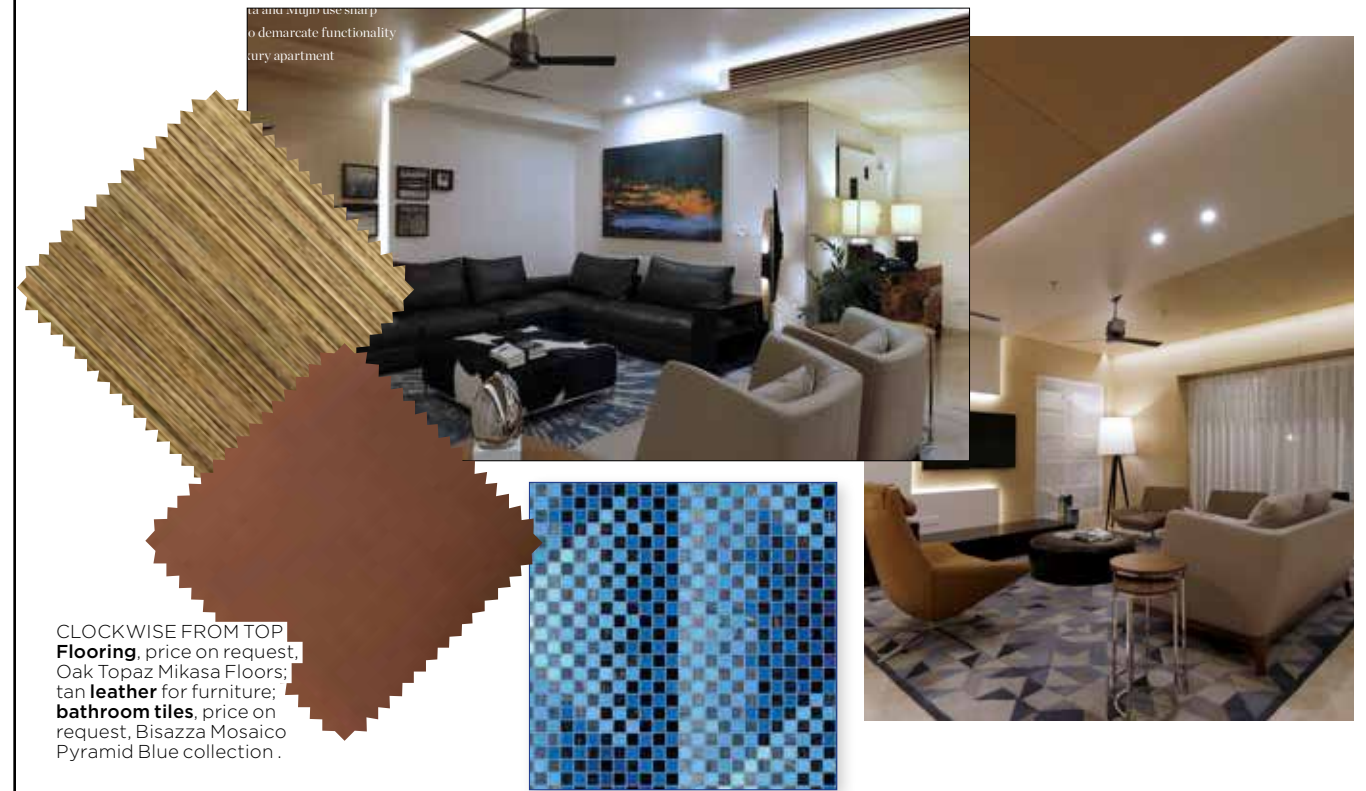
→ **BEDROOM**

The white and brown palette of the bedroom has a sweeping curved ceiling blending into the wall. Note the custom made silk fabric light. The lighting design adds an element of mystique.



IDEAS TO STEAL

The glamour of luscious colours, stylish furniture and iconic brands



CLOCKWISE FROM TOP
Flooring, price on request, Oak Topaz Mikasa Floors;
tan leather for furniture;
bathroom tiles, price on request, Bisazza Mosaico Pyramid Blue collection .



CLOCKWISE FROM RIGHT
Ceiling fan, price on request, Havells;
floor carpet, price on request, Qaaleen; **bath tub**, price on request, Eclipse, Antoniolupi;
table, price on request, Andromeda, Jumbo Collection; **bed**, price on request, Flexform;
lamp, ₹23,970, Alto, Iqrup+Ritz.

FOR CONTACTS, SEE STOCKISTS PAGES